



	1
1.1	1
1.2	1
1.3	1
1.4	3
1.5	4
	9
2.1	9
2.2	12
2.3	18
2.4	19
2.5	20
2.6	20
2.7	21
2.8	21
	22
3.1	22
3.2	22
3.3	23
3.4	34
	36
4.1	36
4.2	37
4.3	38
	41
5.1	41
5.2	41
5.3	42
5.4	42
5.5	43

5.6	45
5.7	45
	46
6.1	46
6.2	47
6.3	49
6.4	51
6.5	52
6.6	54
6.7	56
	57
7.1	57
7.2	57
7.3	58
7.4	58
	61
8.1	61
8.2	62
8.3	63

1.1

1992

1.2

1.3

10 51 2020
 48

1-1 2019-2020

1		050201			
2		050207			

3		050301			
4		050101			
5		050103			
6		130305			
7		120802T			
8		030102T			
9		120204			
10		120202			
11		120601			
12		020303			
13		120203K			
14		020309T			
15		020401			
16		020304			
17		080901			
18		080902			
19		080903			
20		080911TK			
21		082801			
22		082803			
23		080601			
24		080801			
25		081004			
26		080803T			
27		080213T			
28		080202			
29		080203			

--	--	--	--	--	--

30

08004

				225	225	0	233
				370	370	0	376
		660		30	30	0	31

1			671	284	310	26
			1412	313	325	12
2			10	415	447	32
			8	340	358.77	18.77
3			40	59.033	63.20(4.17
				58.193(63.13	4.9(

			10	408.5	480	71.5
12			51	430	489.95	59.95

2.1

2-2 2-3

2-2

					35				
				%)		%)			
1		73	18	24.66	8	10.96	118	1523	11.54
2		66	40	60.61	13	19.70	46	1974	22.18
3		99	62	62.63	8	8.08	138	4695	27.95
4		53	33	62.26	9	16.98	111	2415	22.26
5		29	12	41.38	7	24.14	51	857	15.72
6		59	44	74.58	7	11.86	110	3604	31.61
7		33	17	51.52	12	36.36	72	1787	25.90
8		38	27	71.05	1	2.63	45	1069	17.67
9		36	17	47.22	10	27.78	52	1614	26.03
10	()	74	39	52.70	16	21.62	57	1650	16.10
11		1	1	100.00	0	0.00	0	0	0.00
12		15	5	33.33	4	26.67	29	0	0.00
13		19	13	68.42	3	15.79	46	0	0.00
14		1	1	100.00	0	0.00	1	0	0.00
15		10	9	90.00	0	0.00	42	0	0.00

2-3

1			53	43	1109	14.89
2			17	21	414	15.05
3			12	9	795	48.18
4			21	19	656	21.51
5			10	3	155	13.48
6			20	10	368	14.72
7			5	5	403	53.73
8			7	9	239	20.78
9			16	46	1396	35.79
10			8	21	576	31.14
11			8	6	285	25.91
12			1	4	70	23.33
13			12	13	741	40.05
14			14	1	230	15.86
15			13	22	572	23.83
16			6	10	183	16.64
17			7	36	754	30.16
18			37	56	1434	22.06
19			5	6	191	23.88
20			2	0	36	18.00
21			18	37	611	16.74
22			9	14	246	15.38
23			15	29	1156	39.19
24			5	16	288	22.15
25			3	2	110	27.50
26			5	0	349	69.80
27			2	0	64	32.00

28			13	45	1046	29.46
29			3	2	89	22.25
30			3	3		

2-4

1			63	88
2			26	42
3			31	49
4			32	55
5			20	39
6			19	37
7			30	55
8			17	42
9			73	98
10			52	62
11			24	41
12			32	45
13			33	39
14			12	16
15			36	48
16			29	41
17			67	51
18			79	66
19			33	45
20			49	54
21			32	46
22			68	76
23			49	57
24			41	50
25			48	45
26			62	81
27			31	38

2-5

					%
1			3	3	100.00
2			0	0	0.00
3			3	3	100.00
4			7	7	100.00
5			3	3	100.00
6			3	3	100.00
7			3	3	100.00
8			0	0	0.00
9			9	9	100.00
10			6	6	100.00
11			3	3	100.00
12			5	5	100.00
13			3	3	100.00
14			2	2	100.00
15			5	5	100.00
16			2	2	100.00
17			4	4	100.00
18			3	3	100.00
19			1	1	100.00
20			0	0	0.00
21			2	2	100.00
22			4	4	100.00
23			5	5	100.00
24			4	4	100.00
25			6	6	100.00
26			9	9	100.00
27			4	4	100.00
28			3	3	100.00
29			6	6	100.00

					%
30			6	6	100.00
31			3	3	100.00
32			1	1	100.00
33			1	1	100.00
34			4	4	100.00
35			4	4	100.00
36			5	5	100.00
37			3	3	100.00
38			3	3	100.00
39			1	1	100.00
40			2	2	100.00
41			0	0	0.00
42			2	2	100.00
43			0	0	0.00
44			0	0	0.00
45			2	2	100.00
46		()	0	0	0.00
47			1	1	100.00
48			0	0	0.00
49			1	1	100.00

2.2.3

2019-2020

7639

316

195

2.55%

2-6

2-6

					%
1			17	372	4.57%
2			0	128	0.00%

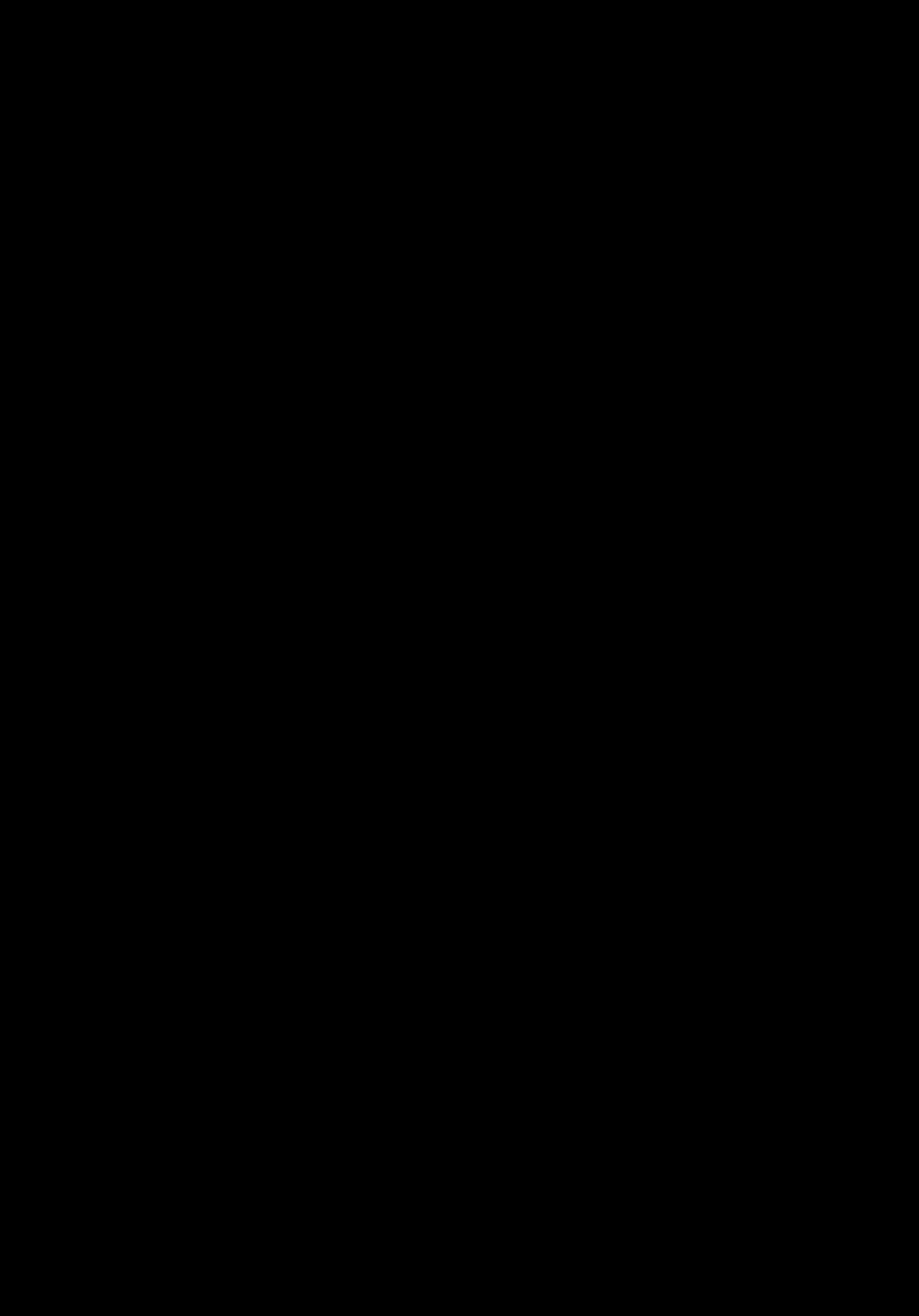
					%
3			4	98	4.08%
4			20	88	22.73%
5			3	39	7.69%
6			8	62	12.90%
7			0	87	0.00%
8			0	44	0.00%
9			12	260	4.62%
10			12	151	7.95%
11			5	58	8.62%
12			1	49	2.04%
13			3	84	3.57%
14			1	17	5.88%
15			3	113	2.65%
16			0	47	0.00%
17			0	225	0.00%
18			0	368	0.00%
19			0	73	0.00%
20			0	124	0.00%
21			2	64	3.13%
22			0	280	0.00%
23			2	131	1.53%
24			0	60	0.00%
25			4	96	4.17%
26			9	297	3.03%
27			4	47	8.51%
28			5	96	5.21%
29			8	83	9.64%
30			13	89	14.61%



					%
31			2	326	0.61%
32			0	59	0.00%

33

0



511

272

2

293

11

207

2.5

2019

12

14922.87

0.70

2019-2020

1005.37

2.6

+

2.2

4163

142.67

67.31

215.49

37087

EBSCO

CALIS CADAL

91

2019

2020

71555

52

2019-2020

784

2689

2.7

79 9 456
2020
12 18 34 4

2.8

2300M
IPV6
610M
2018 10 2020 8
1893
2019

3.1

2020-

3.2.2

20% 25% 1

3-2 3-3

3-2

		%	
	41	21.75	27.42%
	56	30.25	36.19%
	46	26.15	31.75%
	44	24.75	30.01%
	49	28.53	35.47%
	46	26.48	31.42%
	56	31.73	37.97%

3-3

1			38	20.49%
2			49	27.30%
3			48.5	28.36%
4			45	26.39%
5			44	25.81%
6			65	37.90%
7			41	21.41%
8			41	21.75%
9			46.5	26.42%
10			45.5	26.53%
11			44.5	25.87%
12			42.5	24.15%
13			45	25.64%

14			44	25.43%
15			45	25.07%
16			42.5	24.36%
17			59	31.81%
18			59	31.98%
19			60	32.26%
20			74.5	37.53%
21			74.5	40.71%
22			49.5	26.33%
23			55.7	29.55%
24			52	27.59%
25			54.3	28.43%
26			55	29.65%
27			54	29.27%
28			53.6	28.28%
29			55.5	29.68%
30			58.5	30.47%
31			48.5	28.53%
32			50.5	29.36%
33			48.5	28.20%
34			47.5	27.94%
35			45	26.47%
36			47.5	27.94%
37			48.5	28.53%
38			47.5	27.38%
39			46	25.21%
40			52.5	30.52%
41			44	25.51%

42			62.5	35.21%
43			52	30.14%
44			53.5	32.23%
45			62.5	35.61%
46			49	27.76%
47			50.5	28.37%
48			59	32.87%
49			47.5	25.47%

3.2.3

+

3-4 3-5

3-4

	52.0	27.59%

3-5

1			28.5	15.36%
2			37.5	20.89%
3			36.0	21.05%
4			47.0	27.57%
5			44.0	25.81%
6			32.0	18.66%
7			50.0	26.11%
8			52.0	27.59%
9			38.0	21.59%
10			34.0	19.83%
11			40.0	23.26%
12			34.0	19.32%
13			38.0	21.65%
14			34.0	19.65%
15			32.0	17.83%
16			34.0	19.48%
17			32.0	17.25%
18			34.0	18.43%

20			11
21			19
22			5
23			5
24			8
25			5
26			5
27			5
28			5
29			5
30			5
31			8
32			5
33			7
34			5
35			5
36			6
37			5
38			9
39			9
40			9
41			9
42			7
43			8
44			2
45			6
46			7

47			6
48			5
49		(6)	2

207

3.2.6

2020

5872

3-8

3-8

				%
1		112	87	77.68
2		230	165	71.74
3		184	151	82.07
4		39	36	92.31
5		121	109	90.08
5		84	83	98.81
7		60	43	71.67
8		627	609	97.13
9		80	47	58.75
10		315	167	53.02
11		187	119	63.64
12		123	81	65.85
13		79	67	84.81
14		197	107	54.31
15		365	277	75.89

				%
16		61	39	63.93
17		59	59	100.00

18

2019

1

3

2

12

3.2.7

2017 8

2019

2020

3

8

+

2019

30

4000

90% 2019 10

72 700

2

7

6

10

23

2020

519

2019 2020

476

2500

50%

50

2000

40%

100

60%

2019 9

9000

40

10000

2017

100

2020 8

126

3.4

1:1

2019-2020

3

38

37

209

3-9

3-9

			&	
2018-2019		1	1	50
		33	49	
2019-2020		3	38	247
		37	209	

4.1

4.1.1

2020

100

4.1.2

12

1

2

5.1

2019-2020

5.2

2019

35

16

2

14

2019-2020

5.3

4

5.4

1

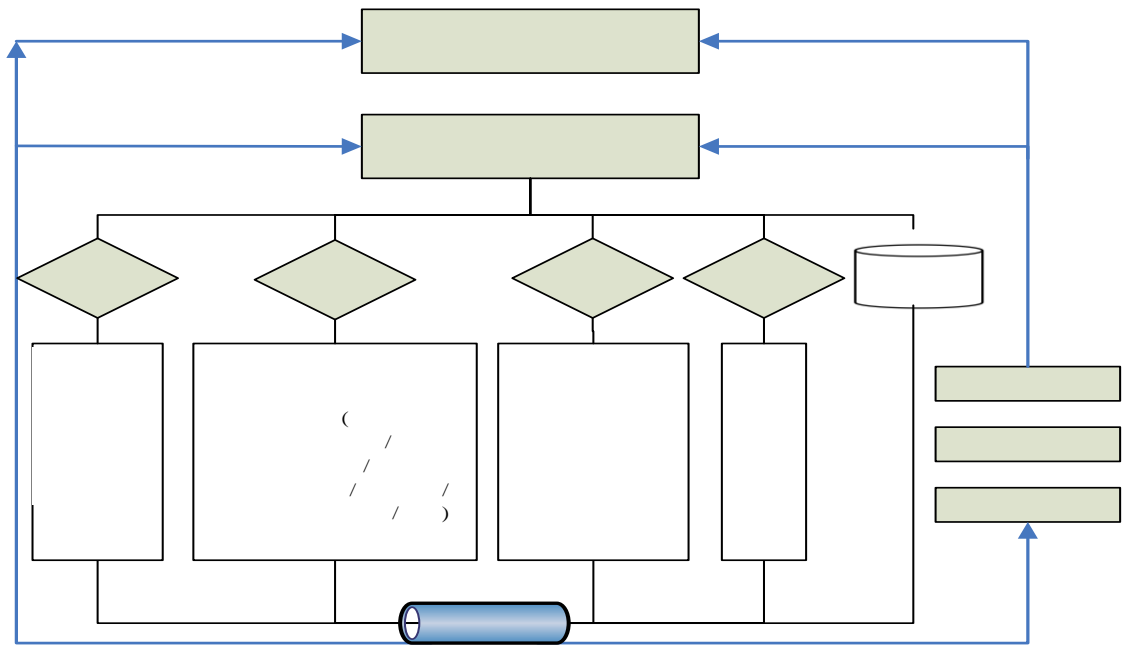
1

1

3

2019-2020

5-1



5-1

5.5

2019-2020

15

612

353

12566

QQ

7

2015

44

5.6

2019

5.7

2018

21

7

2019-2020

3

2020

4

2020

6.1

2019

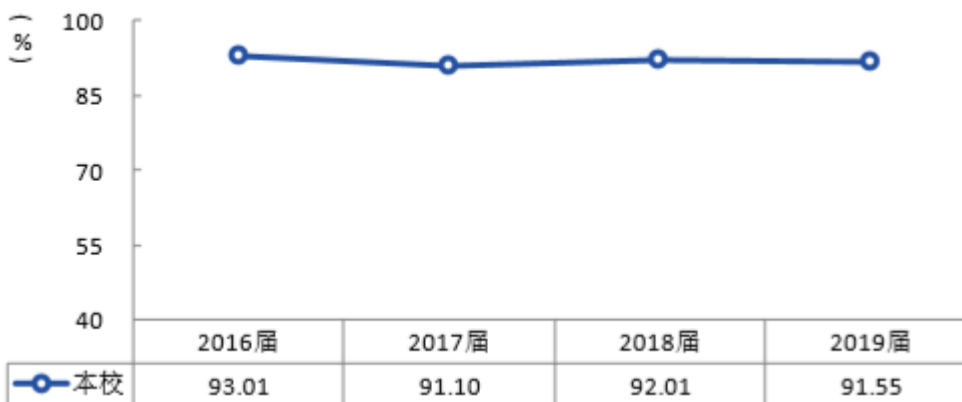
2019

94.91%

96.67% 95.35% 94.81% 94.91%

6.1.1

93.01% 91.10% 92.01% 91.55%



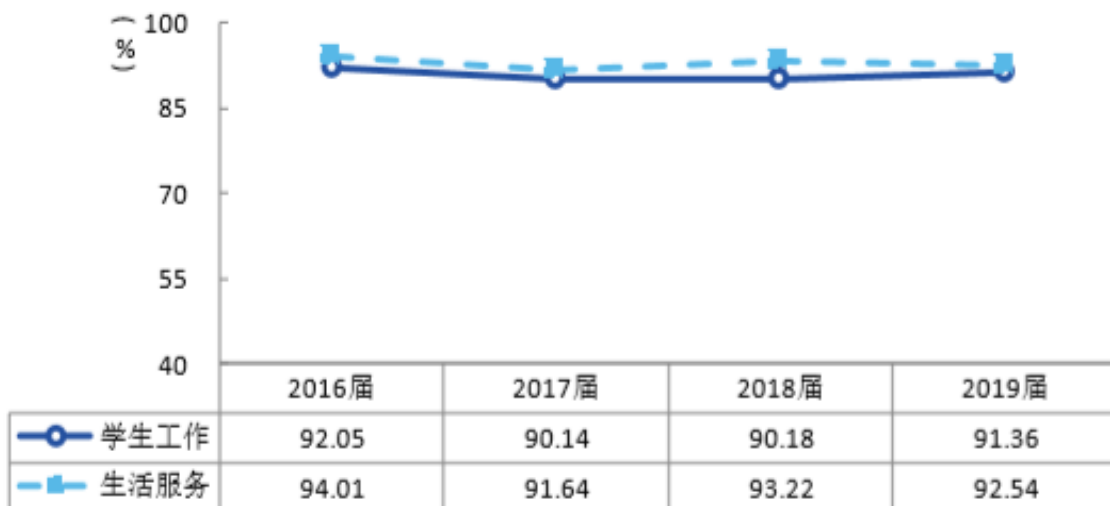
6-1

2019

6.1.2

92.05% 90.14% 90.18% 91.36%

94.01% 91.64% 93.22% 92.54%

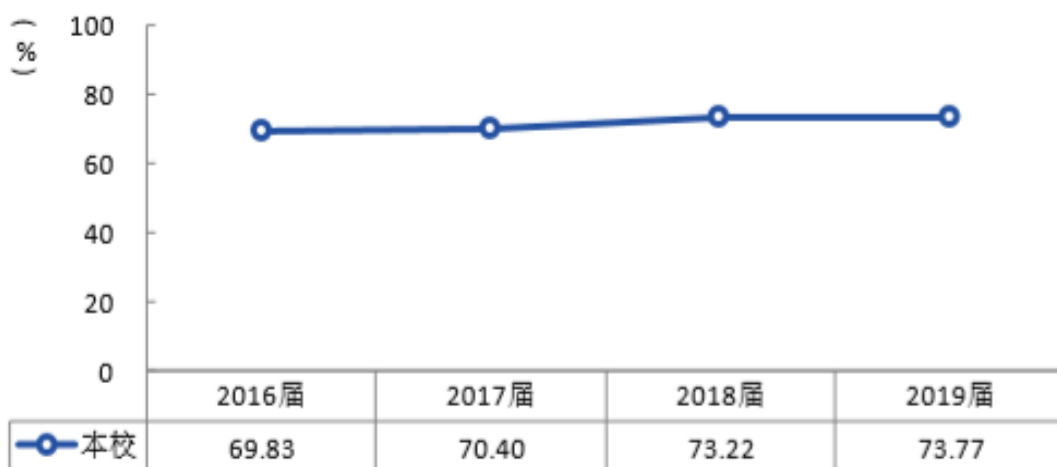


6-2

2019

6.1.3

69.83% 70.40% 73.22%
73.77%



6-3

2019

6.2

2020 5873 5763 98.13% 2020
5763 5631 97.71%

6-1

					%	%
1		60	59	59	98.33	100.00
2		123	122	119	99.19	97.54
3		315	310	306	98.41	98.71
4		121	117	117	96.69	100.00
5		39	39	39	100.00	100.00
6		230	225	224	97.83	99.56
7		112	110	108	98.21	98.18
8		184	179	177	97.28	98.88
9		220	219	216	99.55	98.63
10		385	381	369	98.96	96.85
11		53	53	53	100.00	100.00
12		65	64	60	98.46	93.75
13		80	78	75	97.50	96.15
14		71	69	68	97.18	98.55
15		369	360	352	97.56	97.78
16		129	128	127	99.22	99.22
17		34	33	31	97.06	93.94
18		82	81	79	98.78	97.53
19		36	34	33	94.44	97.06
20		89	88	82	98.88	93.18
21		197	196	176	99.49	89.80
22		365	354	335	96.99	94.63
23		61	58	57	95.08	98.28
24		330	321	307	97.27	95.64
25		46	45	43	97.83	95.56
26		110	106	106	96.36	100.00
27		59	57	54	96.61	94.74

					%	%
28		108	108	102	100.00	94.44
29		103	103	100	100.00	97.09
30		187	183	178	97.86	97.27
31		627	622	621	99.20	99.84
32		51	51	51	100.00	100.00
33		79	79	77		

6		90.09%	9.91%
7		88.82%	11.18%
8		91.77%	8.23%
9		89.58%	10.42%
10		91.29%	8.71%
11		85.90%	14.10%
12		73.46%	26.54%
13		89.80%	10.20%
14		84.46%	15.54%
15		89.01%	10.99%
16		89.27%	10.73%
17		79.65%	20.35%
18		81.33%	18.67%
19	()	77.88%	22.12%
20		80.19%	19.81%
21	()	77.55%	22.45%
22		84.27%	15.73%
23		91.24%	8.76%
24		79.57%	20.43%
25		82.38%	17.62%
26		84.77%	15.23%
27		85.71%	14.29%
28	()	82.90%	17.10%
29		87.28%	12.72%
30		84.52%	15.48%
31		83.33%	16.67%
32		80.35%	19.65%
33	()	68.42%	31.58%
34		81.66%	18.34%

35		84.42%	15.58%
36		89.66%	10.34%
37		85.32%	14.68%
38		84.47%	15.53%
39		72.73%	27.27%
40		96.88%	3.13%
41	()	80.72%	19.28%
42	()	92.59%	7.41%
43		90.63%	9.37%
44		91.85%	8.15%
45		88.87%	11.13%
46		88.58%	11.42%
47		88.27%	11.73%
48		77.99%	22.01%
49		76.92%	23.08%
50		90.70%	9.30%
51		89.57%	10.43%
52		86.40%	13.60%
53		91.67%	8.33%
54		90.98%	9.02%
		86.23%	13.77%

6.4

270 5% 2020

2020 65

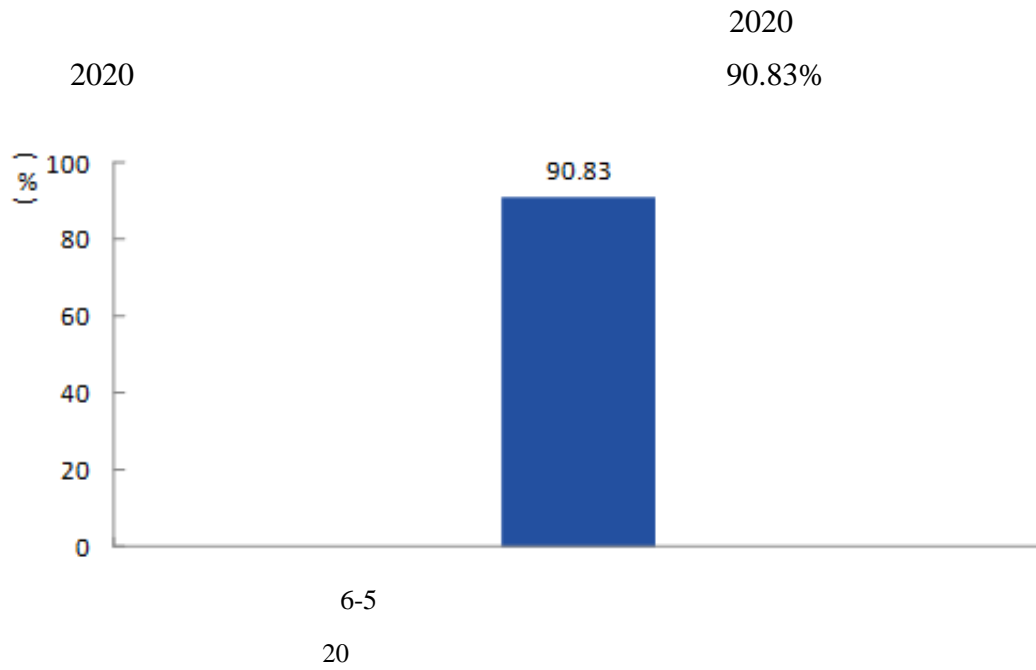
6.5

2020	5888	9	1	
72.04%	59.21%	4.57%		1.09%
0.41%	6.00%	0.78%	2020	
	6-2			
		96.57%	93.22%	93.47%

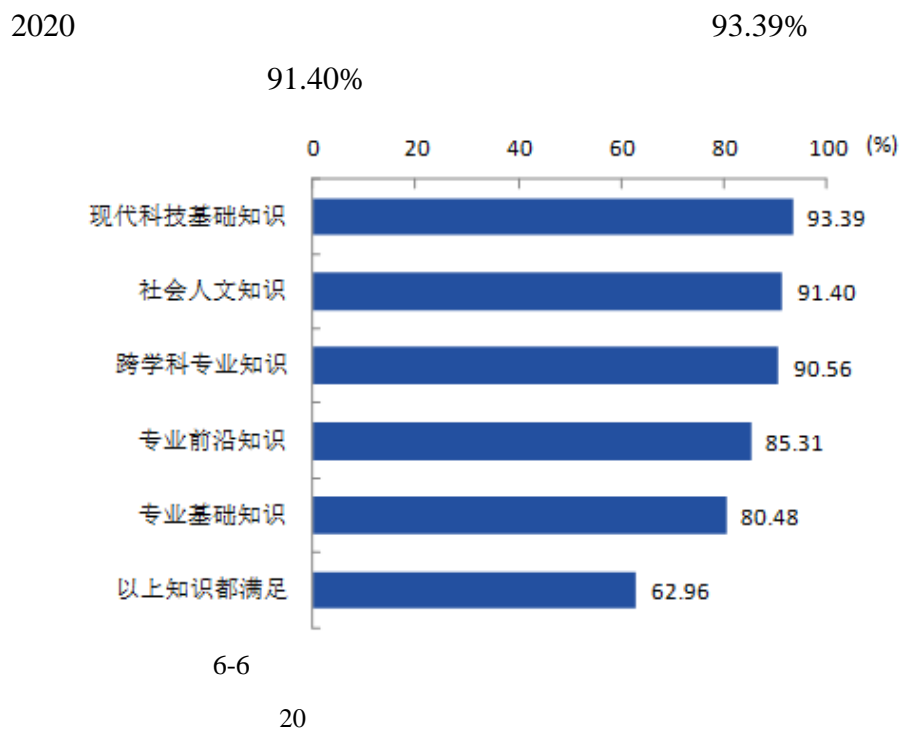
				%
18		110	93	84.55
19		59	38	64.41
20		385	276	71.69
21		53	35	66.04
22		65	43	66.15
23		80	50	62.50
24		71	51	71.83
25		280	202	72.14
26		89	63	70.79
27		46	35	76.09
28		336	263	78.27
29		108	89	82.41
30		104	74	71.15
31		129	100	77.52
32		35	26	74.29
33		82	47	57.32
34		38	30	78.95
35		220	144	65.45
36		51	35	68.63
37		216	138	63.89
38		56	32	57.14
39		48	33	68.75
40		42	32	76.19
41		38	33	86.84
42		72	56	77.78
43		89	73	82.02
44		29	22	75.86
		5888	4242	72.04

6.6

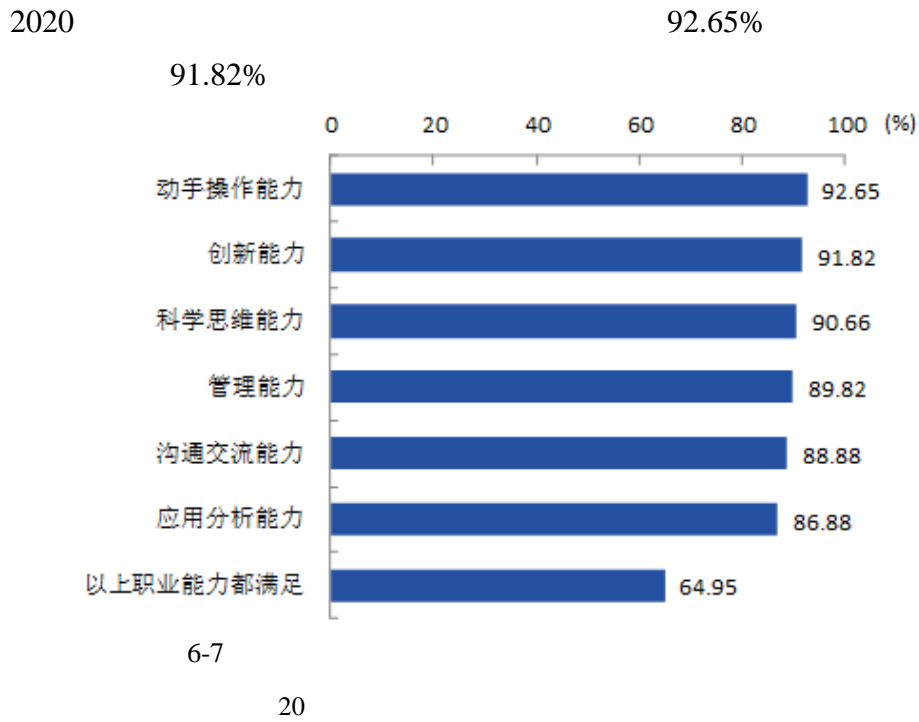
6.6.1.



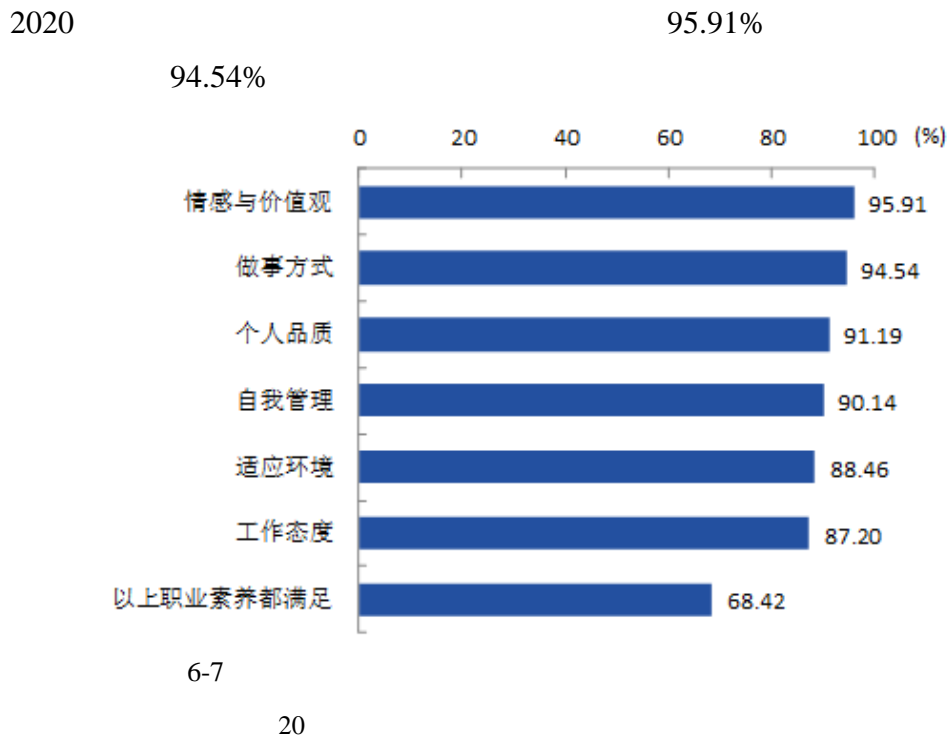
6.6.2.



6.6.3.



6.6.4.



2018 2

2019 6

2019 18

2019 8

7.1

7.2

7.3

20

11

1

207

7.4

8.1

8.1.1

8.2

8.2.1

8.2.3

8.3

8.3.1

95.69

8.3.2

1680

2.4

77

MOOC